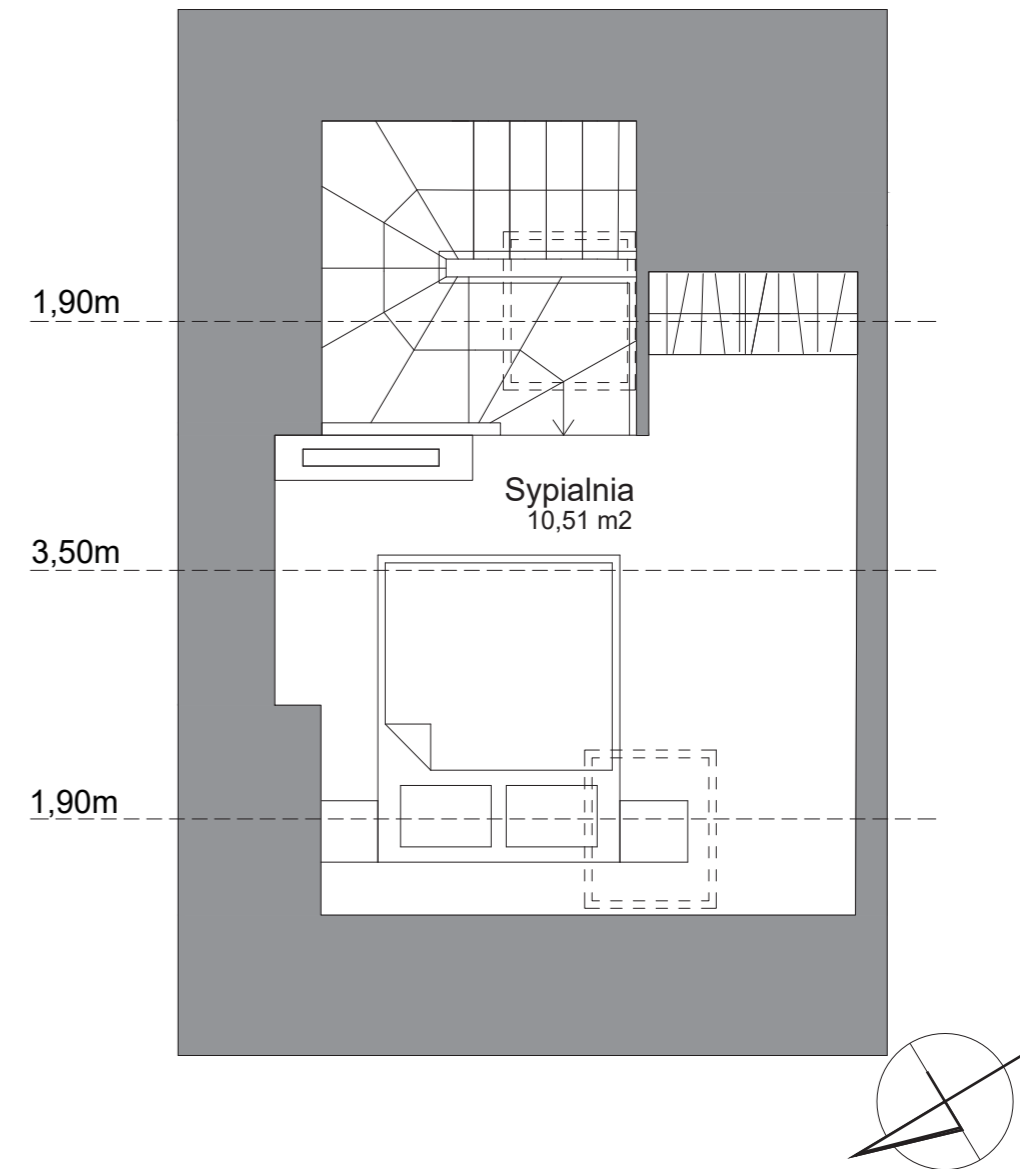
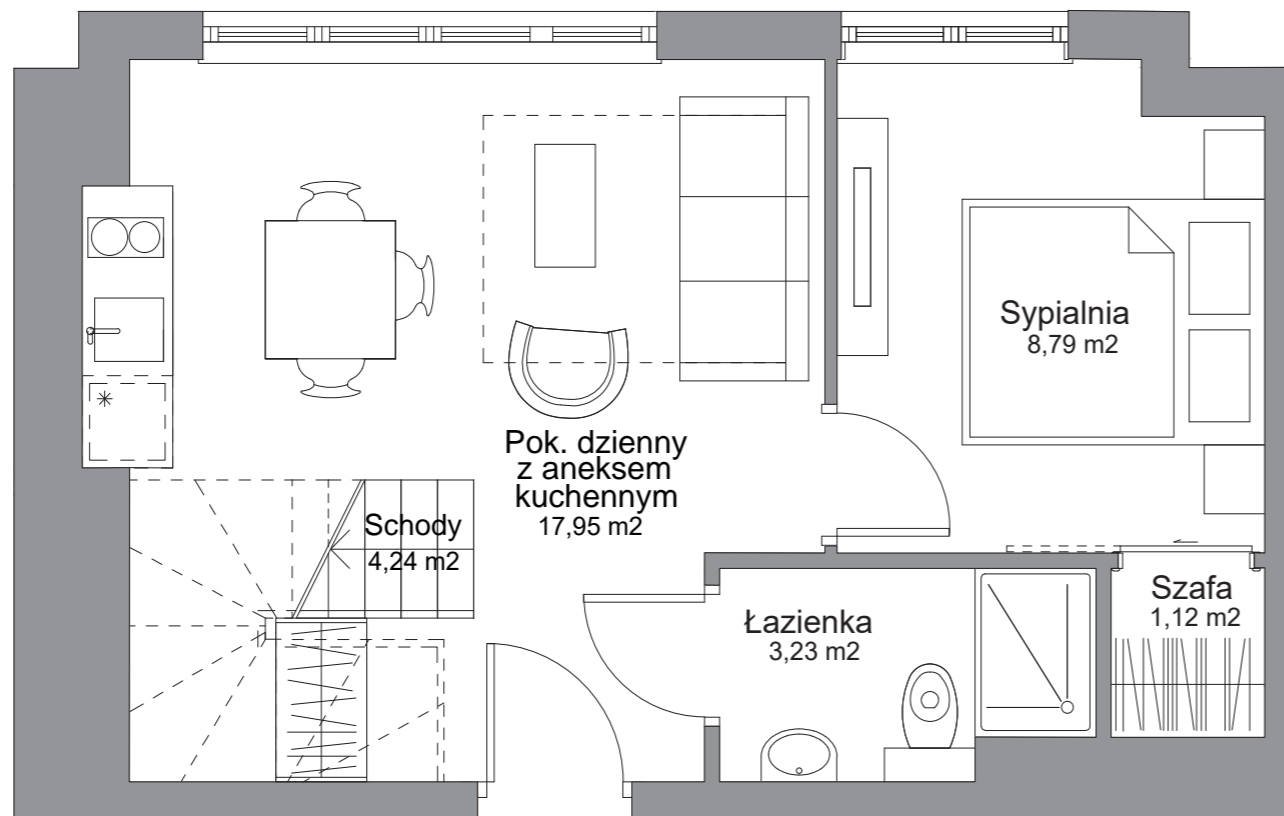




WATERLANE VINTAGE

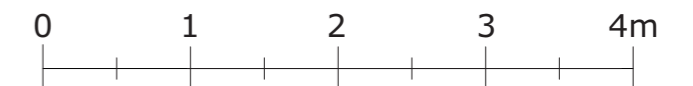
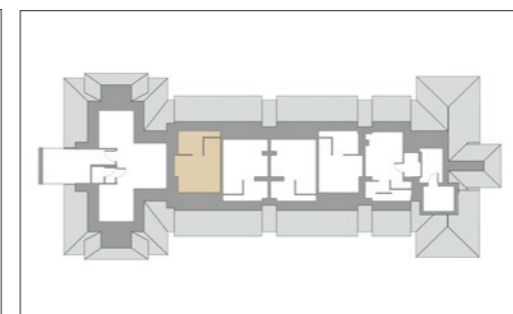
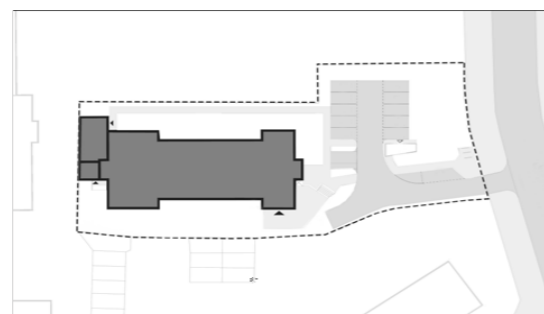


Inwestor:



Member of LP Group

LP Wałowa sp. z o.o
Stągiewna 19/2
80-750 Gdańsk



Apartament	nr 45
piętro	4
ilość pokoi	3
pow. użytkowa netto (Pu)	45,84 m ²
pow. wewnętrzna (Pw)	46,71 m ²